



ENERGY

INDEX

ENERGY

(Wind Power Generation)



Mitsubishi Materials is constantly engaging ultra modern technologies in the research and development of cutting tools. Results of the research provide solutions for the ever increasing requirements of the energy industry.

HUB

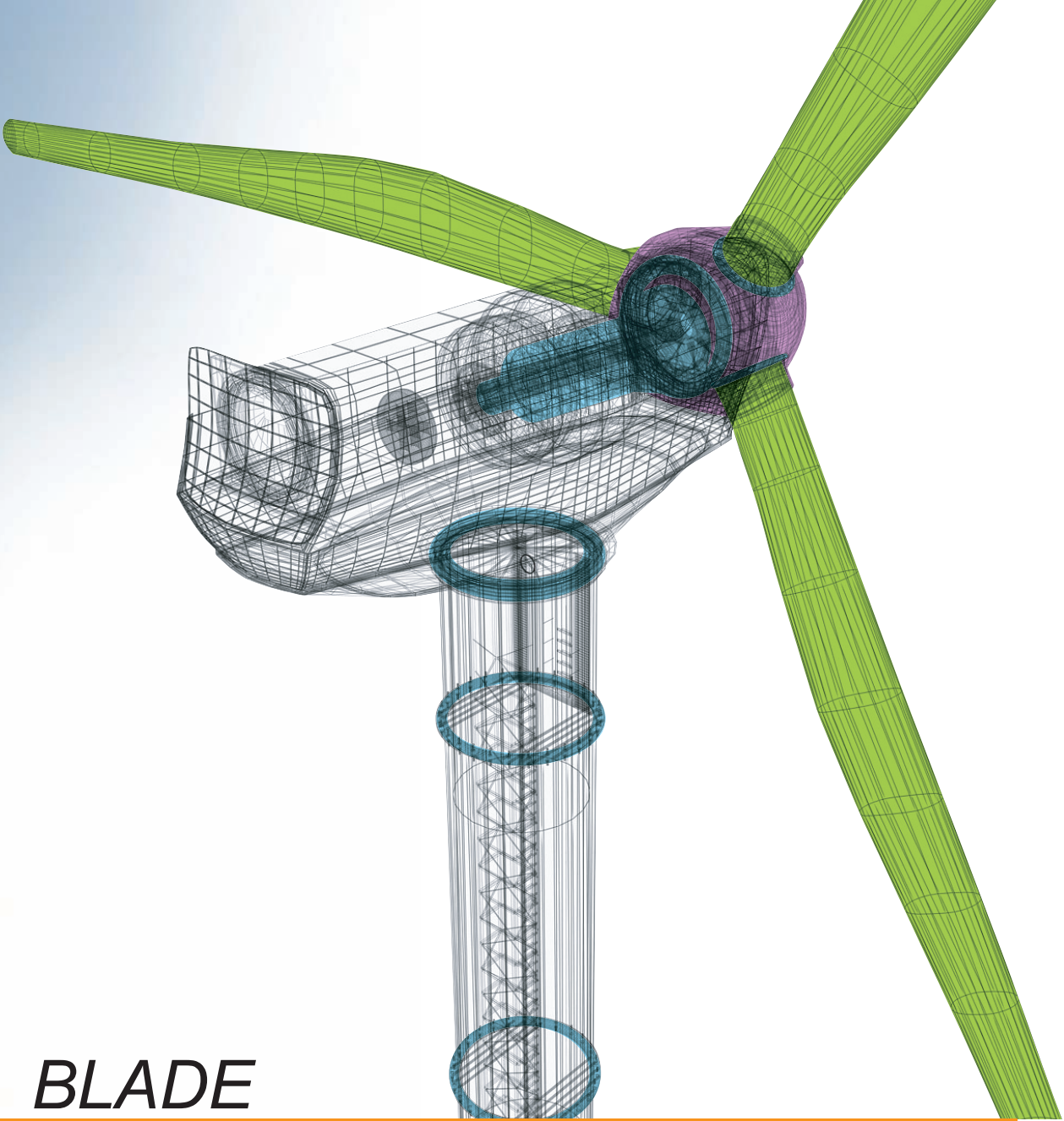
3



SLEWING RING/BEARING

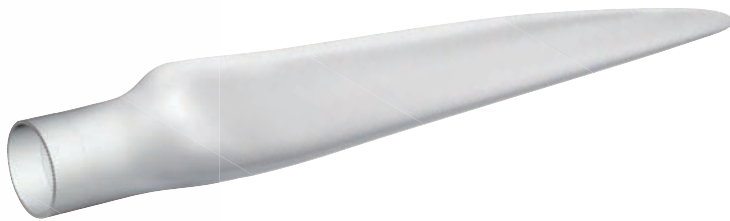
5





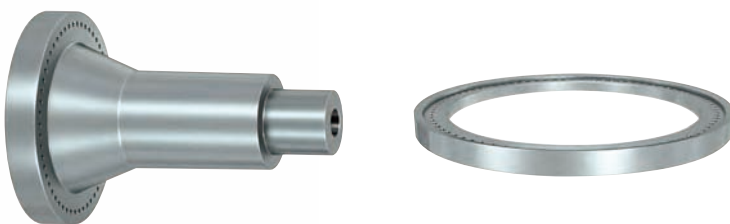
BLADE

4



SHAFT/CONNECTING RING

6



Work material [Ductile cast iron]

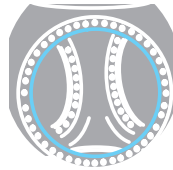
Drilling

Indexable drills with precisely balanced sharpness and stability achieve high efficiency machining for drilling large components.



Contour machining

Indexable end mills exhibit low cutting resistance and stability machining for long overhang tool applications.



Face milling

Indexable milling tools with fine and extra fine pitch options reduce costs while promoting higher productivity in ductile cast iron machining.



AHX640W



TAW Drill

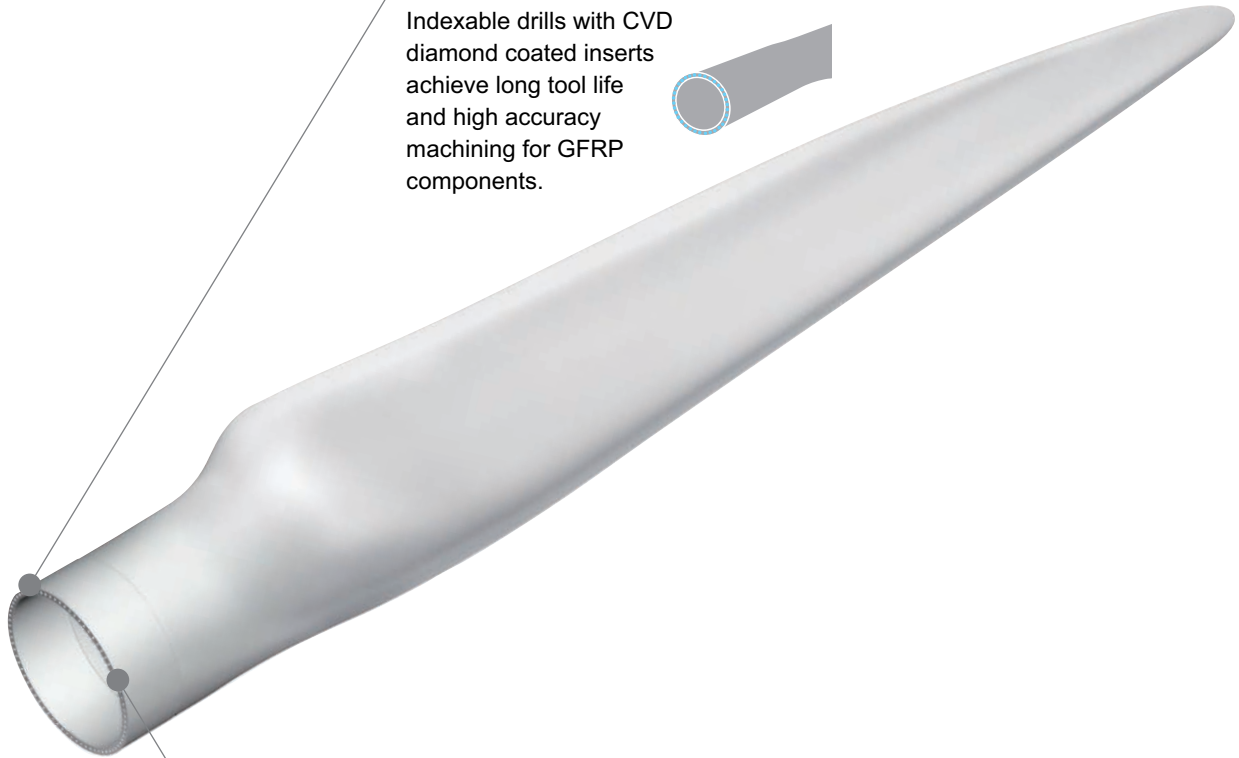


SPX

Work material [GFRP]

Drilling

Indexable drills with CVD diamond coated inserts achieve long tool life and high accuracy machining for GFRP components.



Face milling

Indexable face milling cutters with PCD inserts resist welding enabling longer tool life by preventing unexpected insert damage.



ASX445



NF10000



TAW Drill

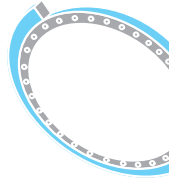


SLEWING RING / BEARING

Work material [Alloy steel]

External, internal and face turning

CVD coated insert series offers excellent chip control and stability for heavy duty turning of forged components with scale.



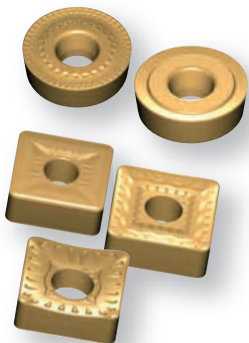
Drilling

Drill series allows excellent chip evacuation to enable efficient machining of large and deep holes.



Raceway turning

Coated CBN grade inserts effectively finish turn hardened components such as HRC50-60.



**Chip
breaker**
for heavy
cutting



**Coated CBN grade
BC8020**



WSTAR
Super long Drill



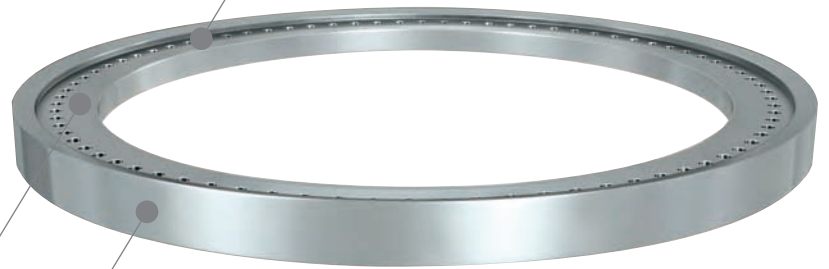
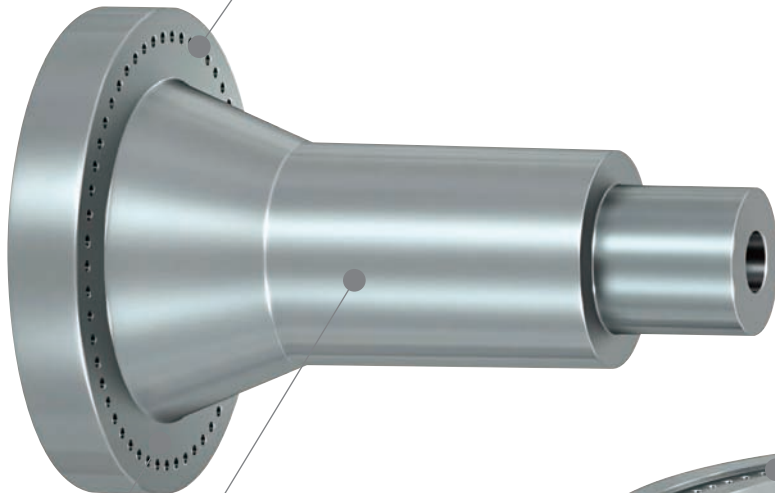
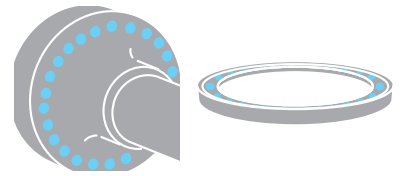
TAF Drill

SHAFT / CONNECTING RING

Work materials [Carbon steel, Alloy steel]

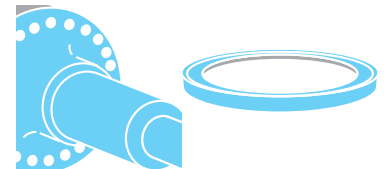
Drilling

Indexable drill series allows excellent chip evacuation to enable efficient machining of large and deep holes.

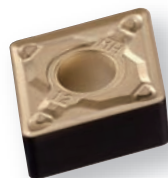


External and face turning

CVD coated insert series offers excellent chip control and stability for heavy duty turning of forged components with scale.



**Chip
breaker**
for heavy
cutting



**UE
Series**



**Double
Clamp
Holder**

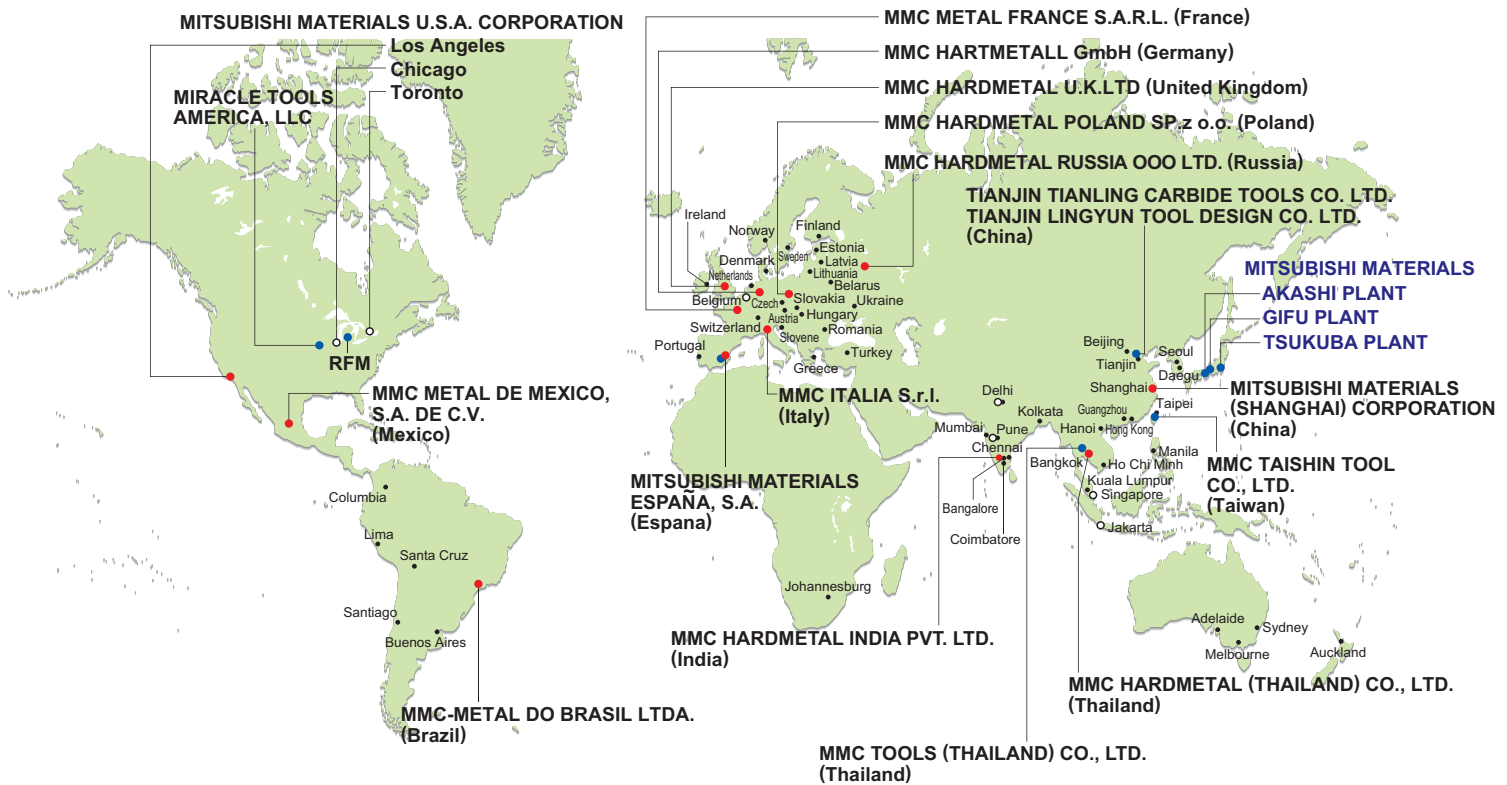


**TAW
Drill**



**TAF
Drill**

MITSUBISHI Global Network



- Sales Office
- Factory
- Representative Office
- Agency



www.mitsubishicarbide.com

JAPAN
MITSUBISHI MATERIALS CORPORATION
 Area Marketing & Sales Operations
 KFC bldg., 8F, 1-6-1, Yokoami, Sumida-ku, Tokyo 130-0015 Japan
 TEL +81-3-5819-8771-8772 FAX +81-3-5819-8773-8774

USA
MITSUBISHI MATERIALS U.S.A. CORPORATION
 11250 Slater Avenue, Fountain Valley, CA 92708, U.S.A
 TEL. +1-714-352-6100 FAX +1-714-668-1320

MEXICO
MMC METAL DE MEXICO, S.A. DE C.V.
 Av. La Cañada No.16, Parque Industrial
 Bernardo Quintana, El Marques, Queretaro, CP76246 Mexico
 TEL +52-442-221-6136 FAX +52-442-221-6134

BRAZIL
MMC-METAL DO BRASIL LTDA.
 Rua Cincinato Braga, 340, 13° Andar,
 Bela Vista-CEP 01333-010, São Paulo-SP, Brazil
 TEL +55-11-3506-5600 FAX +55-11-3506-5688

CHINA
MITSUBISHI MATERIALS (SHANGHAI) CORPORATION
 Room 3911, UNITED PLAZA 1468, Nanjing Road West,
 Shanghai, 200040 China
 TEL +86-21-6289-0022 FAX +86-21-6279-1180

THAILAND
MMC HARDMETAL (THAILAND) CO., LTD.
 8th Floor Regent House Building, 183 Rajdamri Road,
 Lumpini, Pathumwan, Bangkok 10330, Thailand
 TEL +66-2-651-9800 FAX +66-2-651-9803

INDIA
MMC HARDMETAL INDIA PVT. LTD.
 No.10, 1st Floor, 80 Feet Road, R.M.V 2nd Stage,
 Bangalore - 560094 Karnataka India
 TEL +91-80-2351-6083 FAX +91-80-2351-6080

GERMANY
MMC HARTMETALL GmbH
 Comeniusstr. 2, 40670, Meerbusch, Germany
 TEL +49-2159-91890 FAX +49-2159-918966

UNITED KINGDOM
MMC HARDMETAL U.K. LTD
 Mitsubishi House, Galena Close, Tamworth,
 B77 4AS, U.K.
 TEL +44-1827-312312 FAX +44-1827-312314

FRANCE
MMC METAL FRANCE S.A.R.L.
 6, rue Jacques Monod, 91400, Orsay, France
 TEL +33-1-69 35 53 53 FAX +33-1-69 35 53 50

SPAIN
MITSUBISHI MATERIALS ESPAÑA, S.A.
 Calle Emperador 2, 46136, Museros, Valencia, Spain
 TEL +34-96-144-1711 FAX +34-96-144-3786

ITALY
MMC ITALIA S.r.l.
 V.le delle Industrie 2, 20020 Arese (Mi), Italy
 TEL +39-02 93 77 03 1 FAX +39-02 93 58 90 93

RUSSIA
MMC HARDMETAL RUSSIA OOO LTD.
 ul. Bolschaya Semenovskaya 11, bld. 5,
 107023 Moscow, Russia
 TEL +7-495-72558-85 FAX +7-495-98139-73

POLAND
MMC HARDMETAL POLAND Sp. z o.o.
 Al. Armii Krajowej 61, 50-541 Wrocław, Poland
 TEL +48 71 335-16-20 FAX +48 71 335-16-21